



**HUATAI
MARINE**

CIRCULAR

www.huataimarine.com

pni.bj@huatai-serv.com

Duty Phone: +86 13701125026

Circular Ref. No.: PNI [2022] 07

Date: 19 August 2022



First Batch of High Risk Warning Areas of Collision between Merchant and Fishing Vessels Designated in Fujian Coast

Dear Sir/Madam,

The three and a half month summer fishing ban for some coastal areas in Fujian province (Fujian sea area South of 26°30'N) has ended at 1200 on August 16, and fishermen began fishing operation at sea. Fujian Maritime Safety Administration of

P.R.C. and Fujian Provincial Department of Ocean and Fisheries issued *Announcement on Publishing the First Batch of High Risk Warning Areas of Collision between Merchant and Fishing Vessels* (herein after referred to as ‘high risk warning areas’), wherein the high risk warning areas were published to remind vessels to prevent collision risks. We hereby publish this Circular to introduce the main content of the Announcement for Clubs/Members’ reference.

Background

Numerous fishery farms are distributed in Fujian’s coastal waters, with over 30 thousand fishing boats working throughout the year. Meanwhile, the waters are vital seaways for merchant vessels. In order to prevent collisions between merchant and fishing vessels, a joint research to avoid the risk of collision between merchant and fishing vessels was conducted by Fujian MSA and Fujian Provincial Department of Ocean and Fisheries. As a result, 10 high risk warning areas were designated on basis of the analysis of AIS track data in Fujian coastal waters 2021, and collision accidents in Fujian coastal waters in the recent 10 years.

The Extent of High Risk Warning Areas

High risk warning areas include 10 areas: Shacheng Bay Estuary, Funing Bay Estuary, Lianjiang East, Pingtan East, Niushan Island Southeast, Nanri Island Southeast, Quanzhou Bay Estuary, Xiamen Bay Estuary, Futou Bay Estuary, Dongshan Island Southeast. Their position and coordinates are as below (For details and pictures please refer to the attachment).

No.	Waters	Points	Latitude(N)	Longitude(E)	Water Area (Km ²)
1	Shacheng Bay Estuary	1	27°02'12.6"	120°23'41.4"	68.15
		2	27°02'55.8"	120°22'15.6"	
		3	27°08'41.4"	120°28'52.8"	
		4	27°07'30.6"	120°31'24.6"	
2	Funing Bay Estuary	1	26°49'21.6"	120°14'55.8"	31.37
		2	26°49'39.0"	120°13'30.6"	
		3	26°54'59.4"	120°15'22.8"	
		4	26°54'42.0"	120°16'49.2"	
3	Lianjiang East	1	26°14'20.4"	119°53'55.2"	105.14
		2	26°24'57.6"	120°01'06.6"	
		3	26°24'57.6"	120°03'40.8"	
		4	26°14'20.4"	119°56'31.8"	
4	Pingtan East	1	25°23'27.0"	119°52'15.0"	98.05
		2	25°24'18.6"	119°50'37.2"	
		3	25°36'51.6"	119°56'58.8"	
		4	25°36'02.4"	119°58'37.2"	
5	Niushan Island Southeast	1	25°14'25.2"	119°52'42.0"	187.39
		2	25°16'04.8"	119°49'47.4"	
		3	25°27'54.0"	119°58'52.2"	
		4	25°26'14.4"	120°01'46.8"	
6	Nanri Island Southeast	1	25°02'40.8"	119°32'25.8"	140.47
		2	25°04'51.6"	119°30'49.2"	
		3	25°12'34.2"	119°42'15.6"	
		4	25°10'24.6"	119°43'50.4"	
7	Quanzhou Bay Estuary	1	24°44'30.0"	118°55'45.0"	94.2
		2	24°45'54.6"	118°54'02.4"	
		3	24°53'34.8"	119°02'22.2"	
		4	24°52'10.2"	119°04'06.0"	
8	Xiamen Bay Estuary	1	24°05'16.2"	118°14'26.4"	130.89
		2	24°07'18.6"	118°12'45.6"	
		3	24°15'22.2"	118°23'00.0"	

		4	24°13'18.0"	118°24'45.0"	
9	Futou Bay Estuary	1	23°43'19.8"	117°44'32.4"	113.92
		2	23°44'54.0"	117°43'10.8"	
		3	23°53'53.4"	117°54'41.4"	
		4	23°52'18.6"	117°56'04.2"	
10	Dongshan Island Southeast (Part A)	A1	23°35'33.0"	117°33'18.6"	61.9
		A2	23°30'45.6"	117°26'07.2"	
		A3	23°32'10.2"	117°24'48.0"	
		A4	23°36'59.4"	117°32'00.6"	
	Dongshan Island Southeast (Part B)	B1	23°30'01.8"	117°32'42.0"	55.02
		B2	23°30'01.8"	117°28'21.0"	
		B3	23°34'22.2"	117°34'13.2"	
		B4	23°32'23.4"	117°35'58.2"	

Note: Coordinates in the table are based on WGS-1984 Coordinate System and high risk warning areas are bounded by lines joining the points.

Notices Issued by Fujian MSA

1. Advice on merchant vessels: Merchant vessels shall navigate on routes published or recommended by maritime departments, make reasonable passage plans and be familiar with the contents of the *Safety Guideline for Preventing of Collision between Merchant Vessels and Fishing Vessels in Chinese Coastal Waters* (Maritime Safety [2021] No.93). Enforce due vigilance and navigate with caution when sailing through the high risk warning areas and the adjacent waters. When fishing vessels are spotted, their dynamic action shall be clearly identified. Restrictions and manoeuvre characteristics of own ship as well as the encountered vessel shall be taken into account when taking collision avoidance actions. Any action to avoid collision shall be taken in ample time. The alteration

of course and/or speed shall be large enough. Action taken to avoid collision shall be such as to result in passing at a safe distance until the other vessel is past and clear.

2. Advice on fishing vessels: Fishing vessels shall avoid anchoring in the high risk warning areas, when approaching or passing the high risk warning areas, adequate vigilance and due caution shall be kept; lookout shall be strengthened and safe speed shall be maintained to avoid collision.

Loss Prevention Suggestions

Vessels are advised to plan routes reasonably, try to avoid fishing vessel concentrated waters. Appropriate bridge watch arrangement shall be made and a proper look-out shall be maintained to take collision avoidance action timely. For more detailed loss prevention suggestions, please kindly refer to Huatai Circular PNI[2021]11--Collision between Merchant and Fishing Vessels in Chinese Waters.

Please feel free to contact Huatai Beijing (pni.bj@huatai-serv.com) or our local branch (pni.xm@huatai-serv.com) if you have any query.

Best regards,



CUI Jiyu

Head of Marine Team

Attachment 1: The Table of First Batch of High Risk Warning Areas of Collision between Merchant and Fishing Vessels

No.	Waters	Name	Points	Latitude(N)	Longitude(E)	Water Area (Km ²)	Main Risks
1	Shacheng Bay Estuary	Shacheng Bay Estuary High Risk Area	1	27°02'12.6"	120°23'41.4"	68.15	<ol style="list-style-type: none"> 1. Seaways for merchant vessels overlap with fishing areas. 2. Heavy traffic for merchant and fishing vessels. 3. Seaways for merchant vessels near fishing harbors and seaways converge with fishing vessels' traffic flows. 4. Collision between merchant and fishing vessels occurred frequently for many years.
			2	27°02'55.8"	120°22'15.6"		
			3	27°08'41.4"	120°28'52.8"		
			4	27°07'30.6"	120°31'24.6"		
2	Funing Bay Estuary	Funing Bay Estuary High Risk Area	1	26°49'21.6"	120°14'55.8"	31.37	<ol style="list-style-type: none"> 1. Seaways for merchant vessels overlap with fishing areas. 2. Heavy traffic for merchant and fishing vessels. 3. Seaways for merchant vessels near fishing harbors and seaways converge with fishing vessels' traffic flows.
			2	26°49'39.0"	120°13'30.6"		
			3	26°54'59.4"	120°15'22.8"		
			4	26°54'42.0"	120°16'49.2"		

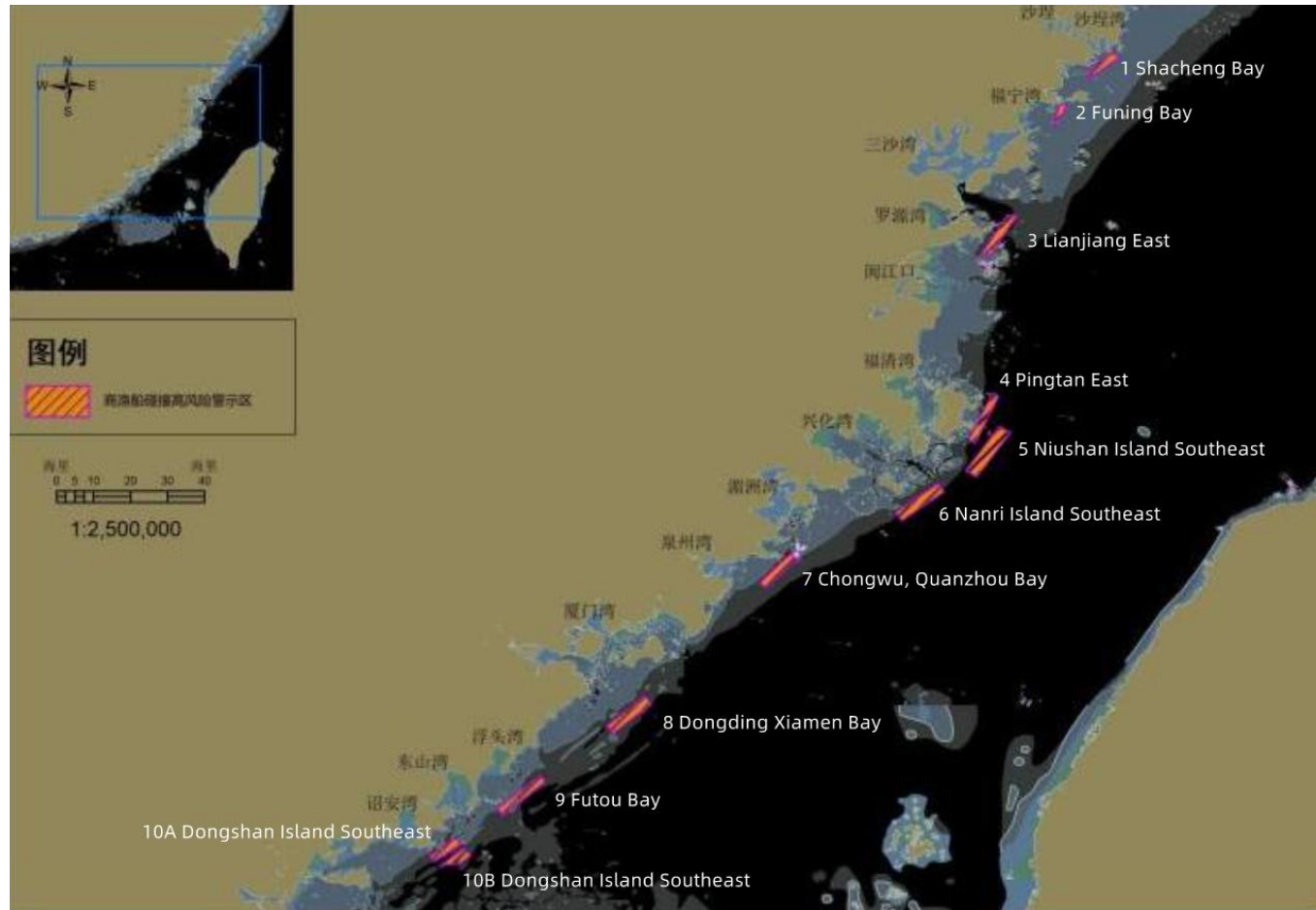
3	Lianjiang East	Lianjiang East Nearshore Waters High Collision Area	1	26°14'20.4"	119°53'55.2"	105.14	<ol style="list-style-type: none"> 1. Heavy traffic for merchant and fishing vessels. 2. Seaways for merchant vessels near fishing harbors and seaways converge with fishing vessels' traffic flows. 3. Collision between merchant and fishing vessels are frequent for many years.
			2	26°24'57.6"	120°01'06.6"		
			3	26°24'57.6"	120°03'40.8"		
			4	26°14'20.4"	119°56'31.8"		
4	Pingtan East	Pingtan East Nearshore Waters High Collision Area	1	25°23'27.0"	119°52'15.0"	98.05	<ol style="list-style-type: none"> 1. Seaways for merchant vessels overlap with fishing areas. 2. Heavy traffic for merchant and fishing vessels. 3. Seaways for merchant vessels near fishing harbors and seaways converge with fishing vessels' traffic flows.
			2	25°24'18.6"	119°50'37.2"		
			3	25°36'51.6"	119°56'58.8"		
			4	25°36'02.4"	119°58'37.2"		
5	Niushan Island Southeast	Niushan Island Southeast High Risk Area	1	25°14'25.2"	119°52'42.0"	187.39	<ol style="list-style-type: none"> 1. Seaways for merchant vessels overlap with fishing areas. 2. Collision between merchant and fishing vessels are frequent for many years.
			2	25°16'04.8"	119°49'47.4"		
			3	25°27'54.0"	119°58'52.2"		

			4	25°26'14.4"	120°01'46.8"		
6	Nanri Island Southeast	Nanri Island Southeast High Risk Area	1	25°02'40.8"	119°32'25.8"	140.47	<ol style="list-style-type: none"> 1. Seaways for merchant vessels overlap with fishing areas. 2. Heavy traffic for merchant and fishing vessels. 3. Collision between merchant and fishing vessels are frequent for many years.
			2	25°04'51.6"	119°30'49.2"		
			3	25°12'34.2"	119°42'15.6"		
			4	25°10'24.6"	119°43'50.4"		
7	Quanzhou Bay Estuary	Chongwu, Quanzhou Bay Estuary High Risk Area	1	24°44'30.0"	118°55'45.0"	94.2	<ol style="list-style-type: none"> 1. Seaways for merchant vessels overlap with fishing areas. 2. Heavy traffic for merchant and fishing vessels. 3. Seaways for merchant vessels near fishing harbors and seaways converge with fishing vessels' traffic flows.
			2	24°45'54.6"	118°54'02.4"		
			3	24°53'34.8"	119°02'22.2"		
			4	24°52'10.2"	119°04'06.0"		
8	Xiamen Bay Estuary	Dongding Xiamen Bay Estuary High Risk Area	1	24°05'16.2"	118°14'26.4"	130.89	<ol style="list-style-type: none"> 1. Seaways for merchant vessels overlap with fishing areas. 2. Collision between merchant and fishing vessels are frequent for many years.
			2	24°07'18.6"	118°12'45.6"		
			3	24°15'22.2"	118°23'00.0"		

			4	24°13'18.0"	118°24'45.0"		
9	Futou Bay Estuary	Futou Bay Estuary High Risk Area	1	23°43'19.8"	117°44'32.4"	113.92	1. Seaways for merchant vessels overlap with fishing areas. 2. Collision between merchant and fishing vessels are frequent for many years.
			2	23°44'54.0"	117°43'10.8"		
			3	23°53'53.4"	117°54'41.4"		
			4	23°52'18.6"	117°56'04.2"		
10	Dongshan Island Southeast	Dongshan Island Southeast High Risk Area (Part A)	A1	23°35'33.0"	117°33'18.6"	61.9	1. Seaways for merchant vessels overlap with fishing areas. 2. Collision between merchant and fishing vessels are frequent for many years.
			A2	23°30'45.6"	117°26'07.2"		
			A3	23°32'10.2"	117°24'48.0"		
			A4	23°36'59.4"	117°32'00.6"		
		Dongshan Island Southeast High Risk Area (Part B)	B1	23°30'01.8"	117°32'42.0"	55.02	
			B2	23°30'01.8"	117°28'21.0"		

			B3	23°34'22.2"	117°34'13.2"	
			B4	23°32'23.4"	117°35'58.2"	

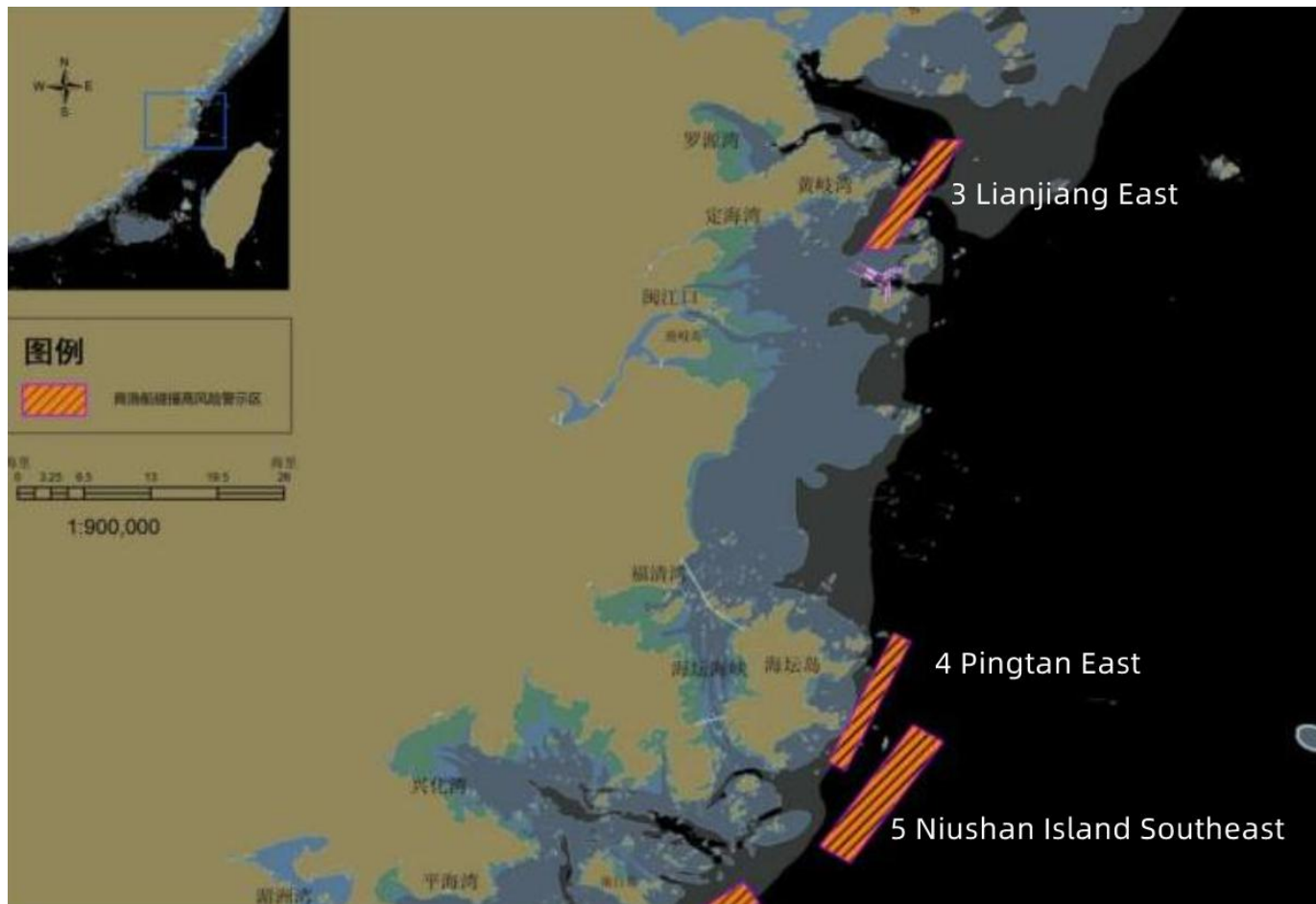
Attachment 2: Position of High Risk Warning Areas



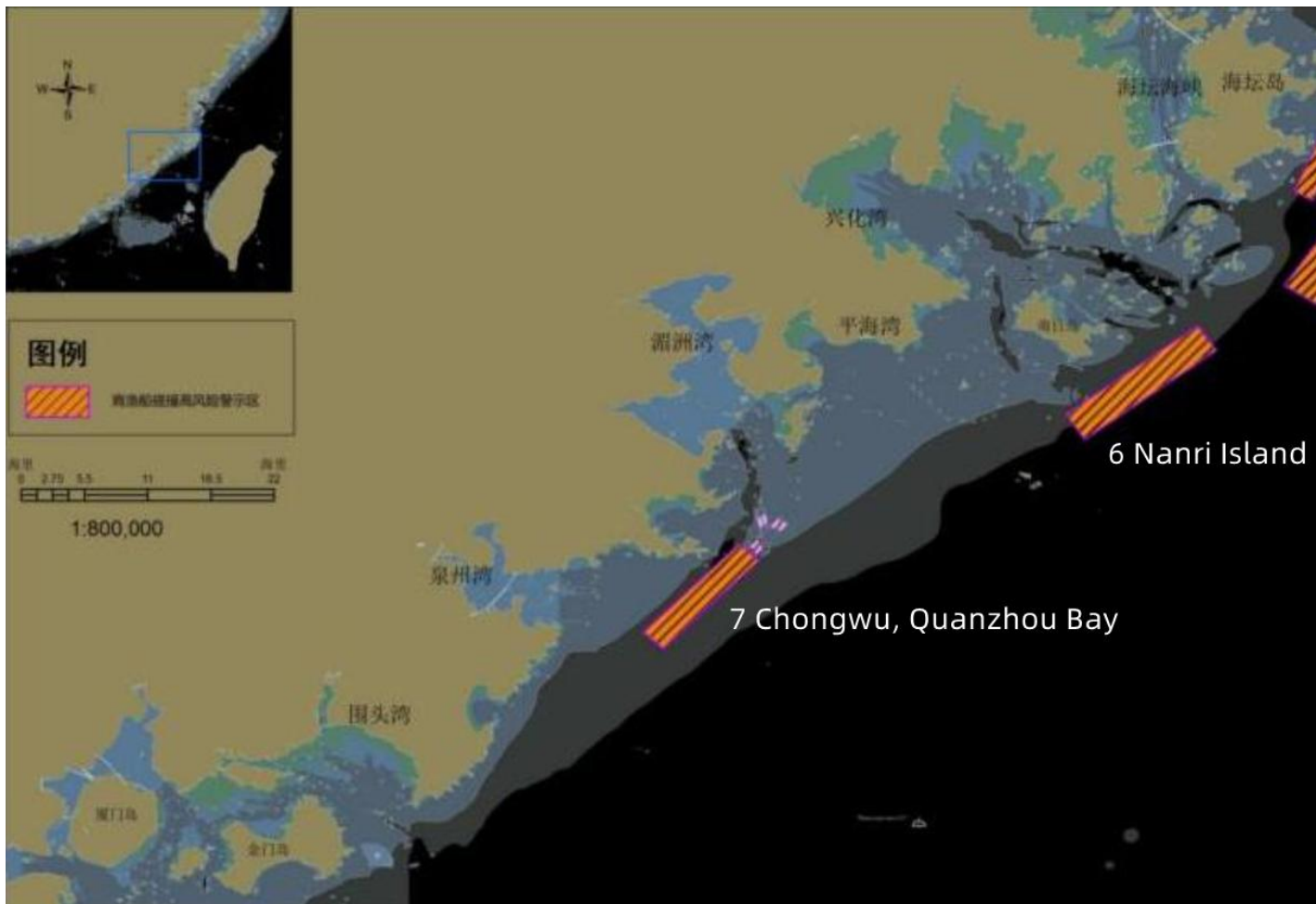
High Risk Warning Areas in Fujian Coastal Waters



High Risk Warning Areas in Ningde Coastal Waters



High Risk Warning Areas in Pingtan, Fuzhou Coastal Waters



High Risk Warning Areas in Quanzhou, Putian Coastal Waters



High Risk Warning Areas in Zhangzhou, Xiamen Coastal Waters